



The Royal
Australian &
New Zealand
College of
Psychiatrists



Certificates of Advanced Training Accreditation Standards (interim)

working
with the
community

309 La Trobe Street, Melbourne VIC 3000 Australia
T +61 3 9640 0646 F +61 3 9642 5652
ranzcp@ranzcp.org www.ranzcp.org
ABN 68 000 439 047

Document scope

This document outlines interim standards designed to ensure Fellows and Associates undertaking advanced training are provided with quality training experiences, underpinned by the relevant syllabus and curriculum, to facilitate the training of safe and competent psychiatrists, including minimum supervision requirements.

These standards are considered ‘interim’ as the RANZCP have commenced work to transition to the AMCs new model standards and procedures in mid-2026. Therefore, these standards are based on the current RANZCP accreditation standards and will be reviewed after the transition, and after an initial run-in period of these Certificate standards.

Formal Education Course (FEC) accreditation, as well as post and supervisor accreditation, are not in scope for this document.

Glossary of Terms

AC	Accreditation Committee
Bi-national Program	Certificate program
BTC	Branch Training Committee
Certificate program	Certificate of Advanced Training program, or “Bi-national Program”
CFT	Committee for Training
DOT	Director of Training
DOAT	Director of Advanced Training
EC	Education Committee
EPA	Entrustable Professional Activities
FEC	Formal Education Committee
FTE	Full Time Equivalent
Health Service	Owns training posts
NZTC	New Zealand Training Committee
Post	Belongs to a Health Service, may be geographically diverse
Program	Jurisdictional zone of training as governed by a BTC or the NZTC
Rotation/Run	A fixed six-month period of time in training
SAT	Subcommittee for Advanced Training
Training location	Zone
Trainee	Fellowship Trainee or Fellow-in-training participating in a Bi-national Program

Background and Purpose of Accreditation

The Royal Australian and New Zealand College of Psychiatrists (RANZCP) is accredited by the Australian and New Zealand Medical Councils to determine and oversee education, training, assessment, and professional development programs for psychiatrists in Australia and New Zealand. In conjunction with local employing health services, it is also responsible for the selection and training of psychiatry trainees. The RANZCP is responsible for the assessment of trainees and for the accreditation of training posts and programs. This includes Certificate of Advanced Training programs, which can be undertaken in Stage 3 of training or following Fellowship.

This document addresses Certificate of Advanced Training programs. RANZCP Post and Program Accreditation Standards are also applicable to pre-Fellowship participants in Certificates of Advanced Training programs.

The underlying purpose of the accreditation process is to ensure that training programs are providing quality training experiences that facilitate the training of safe and competent psychiatrists. The RANZCP, with the help of its committees, has developed an accreditation process using a set of standards covering five educational, clinical and governance areas as outlined in this document. A key RANZCP role is to define these standards, and it is the task of the Accreditation Committee to monitor this through accreditation assessments of training programs.

Certificates of Advanced Training and RANZCP Accreditation

While a Certificate of Advanced Training is often referred to as a Certificate “program”, or an Advanced Training Certificate program, the jurisdictional location of the participants is also often referred to as the program (e.g., the Tasmanian program, or the New Zealand-Dunedin program). Training location is sometimes referred to as the zone.

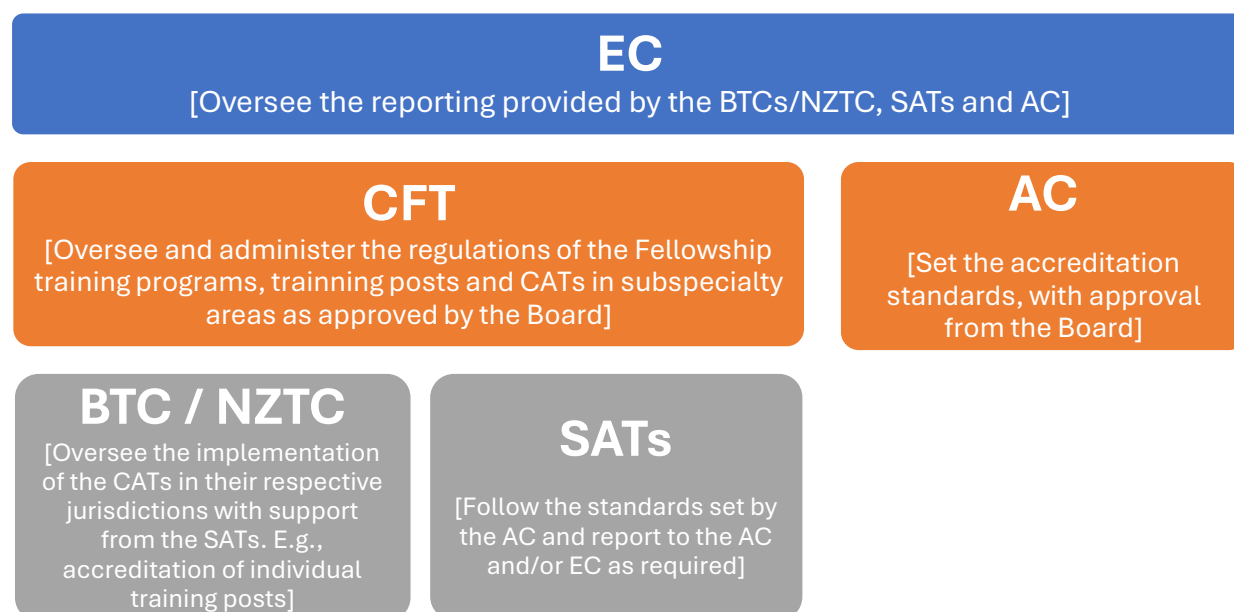
For this document, a Certificate of Advanced Training program will be referred to as the “Bi-national Program” and this refers to the composition of training requirements to achieve the respective Certificate. This is effectively the Bi-national program in the respective area of practice.

The jurisdictional zone of the training will be referred to as the “local program”. Zoning of a Fellowship program, which is governed by a Branch Training Committee (BTC) or the New Zealand Training Committee (NZ), can differ from the zoning of Bi-national Program, which is often governed by a Subcommittee of Advanced Training (SAT) as well as its BTC/NZTC.

For this document, “participants” will encompass Stage 3 trainees and Fellows who are participating in an Advanced Training Certificate program (the latter known as “Fellows in training”), unless otherwise stipulated.

Reporting

These standards have been set by the Accreditation Committee (AC) for ongoing monitoring by the SATs who are responsible for reporting to the Education Committee (EC).



CERTIFICATE OF ADVANCED TRAINING STANDARDS

Standards relating to training programs and training posts are addressed via the accreditation processes set out under separate standards: [Training Program Accreditation Standards](#) and [Training Post Accreditation Standards](#).

Please note that an asterisk (*) in the below standards indicates a standard which is likely to require negotiation between a Fellow in Training and their employer (where that participant is not self-employed), with the support of their Director of Advanced Training (DOAT).

Standard 1 – SELECTION / MONITORING	
1.1.	Clear selection criteria are published on the College website.
1.2.	Stage three Trainees or Fellows apply as per the RANZCP Advanced Training website instructions and are considered for selection into the Bi-national Program as per the relevant Certificate Program Regulation.
1.3.	The SAT ensures participants have the opportunity to formally provide feedback to the DOAT at least every six months regarding their training experiences.
1.4.	The SAT ensures participant feedback is monitored to ensure it is received and is responded to appropriately in a timely manner.
1.5.	The SAT ensures there are processes for monitoring the performance of participants and providing support including formal and informal feedback.
Standard 2 - GOVERNANCE	
2.1.	Final responsibility for approval of the Bi-national Program resides with the RANZCP Board as per the RANZCP Accreditation Policy and Procedure.
2.2.	The advanced training posts for fellowship trainees are accredited by the BTC/NZTC for the specific Certificate training. Where the trainee is a fellow-in-training, the post is accredited by the SAT.
2.3.	The advanced training post is accredited against the RANZCP training post accreditation standards, including specific advanced training experience.
2.4.	There are processes in place to ensure the SAT is informed by the BTC/NZTC regarding any changes in training post accreditation.
2.5.	The SAT ensures there is a DOAT representing the Bi-national Program in each jurisdictional BTC/NZTC.
2.6.	The SAT has adequate processes for quality assurance and evaluation of the Bi-national Program, so that a high standard of training is provided.
2.7.	The SAT has appropriate membership and complies with SAT Regulations
Standard 3 – SAFETY / SUPPORT / ADMINISTRATION	
3.1.	*The SAT, in collaboration with the BTC/NZTC, ensures there is an adequate process for the allocation of certificate trainees, to ensure certificate training needs can be met within required timeframes.
3.2.	The RANZCP Targeted Learning Plans Policy and Procedure is followed by each SAT, with relevant records kept and submitted to the RANZCP Training Department of all formal targeted learning processes with participants.
3.3.	The relationship between the BTC/NZTC and the SAT ensures participants are afforded the same protections – wherever practicable – as Fellowship trainees with regards to workload, welfare and working conditions.
3.4.	The SAT in collaboration with the BTC/NZTC has systems and processes to monitor the safety of trainees in the workplace in line with accreditation standards. Where the trainee is in their own

private practice, the work environment complies with local workplace health and safety requirements.
3.5. There is published information on the College website in relation to curriculum, training requirements, entry requirements, applications form, selection criteria, orientation requirements and relevant handbook for each Certificate.
3.6. SATs ensure there is a process implemented for participants to raise concerns, grievances and complaints about matters affecting their training, health and welfare.
3.7. There is a positive learning environment that fosters respect, diversity, inclusion, equity and cultural safety for participants of diverse backgrounds.
Standard 4 – SUPERVISION
4.1. The SAT, in collaboration with the BTC/NZTC, ensures that each local program follows the requirements for supervisor accreditation in accordance with the Supervision Policy and Procedure (ranzcp.org) .
4.2. *The SAT ensures that supervision is provided by suitably qualified RANZCP Fellows or Affiliates ¹ .
4.3. *A minimum of one-hour individual supervision related to the Advanced Certificate Program, each week for 40 weeks, is required in full for all trainees. Supervision should meet the standard for supervision set out in the training post-accreditation standards.
4.4. *The SAT, in collaboration with the BTC/NZTC, has processes to monitor and ensure that supervisors work alongside fellowship trainees in the workplace for the required minimum duration/sessions. For fellows-in-training, the SAT are directly responsible for ensuring supervision requirements are monitored.
4.5. The SAT, in collaboration with the BTC/NZTC, has an adequate process to monitor the performance of, and support for, supervisors within the Bi-national Program.
4.6. The SAT has an annual process for reporting to the CFT on supervisors and status of certificates to assist with ongoing monitoring
4.7. Participants are supported in delivering quality patient care, including culturally safe care, to patients of diverse backgrounds.
Standard 5: SYLLABUS / CURRICULUM
5.1. Each Bi-national Program has their learning outcomes, syllabus and assessment requirements published on the College website. (Refer About Certificates of Advanced Straining RANZCP)
5.2. The SAT ensures that the bi-national program aligns with the RANZCP Graduate Outcomes and Curriculum Framework.
5.3. The SAT ensures there is a regular formal review process for the learning outcomes, syllabus and program.
5.4. The SAT ensures that local programs can provide all of the mandatory experiences, including syllabus and FEC requirements, for their respective Certificate for participants to be able to complete these within two years.
Standard 6: FORMAL EDUCATION COURSES
6.1. The SAT maintains a formal process for endorsing external formal education courses (FEC), which includes defined criteria to assess and approve a new course. The assessment, decision and duration of accreditation is formally documented.
6.2. The SAT ensures there is a regular and fully documented formal review and monitoring process of each internal and external FEC.

¹ Suitable non-RANZCP psychotherapists are appropriate for supervision of Advanced Training in the Psychotherapies.

REVISION RECORD

Contact:	Manager, Accreditation and Standards		
Document owner:	Education and Training Department		
Date of approval:	Version	Approver	Description
21/03/2026	1.0	Board	New document. AC approval on 28/11/2025. EC approval 5/12/2025.
Mar 2029	Next Review		