

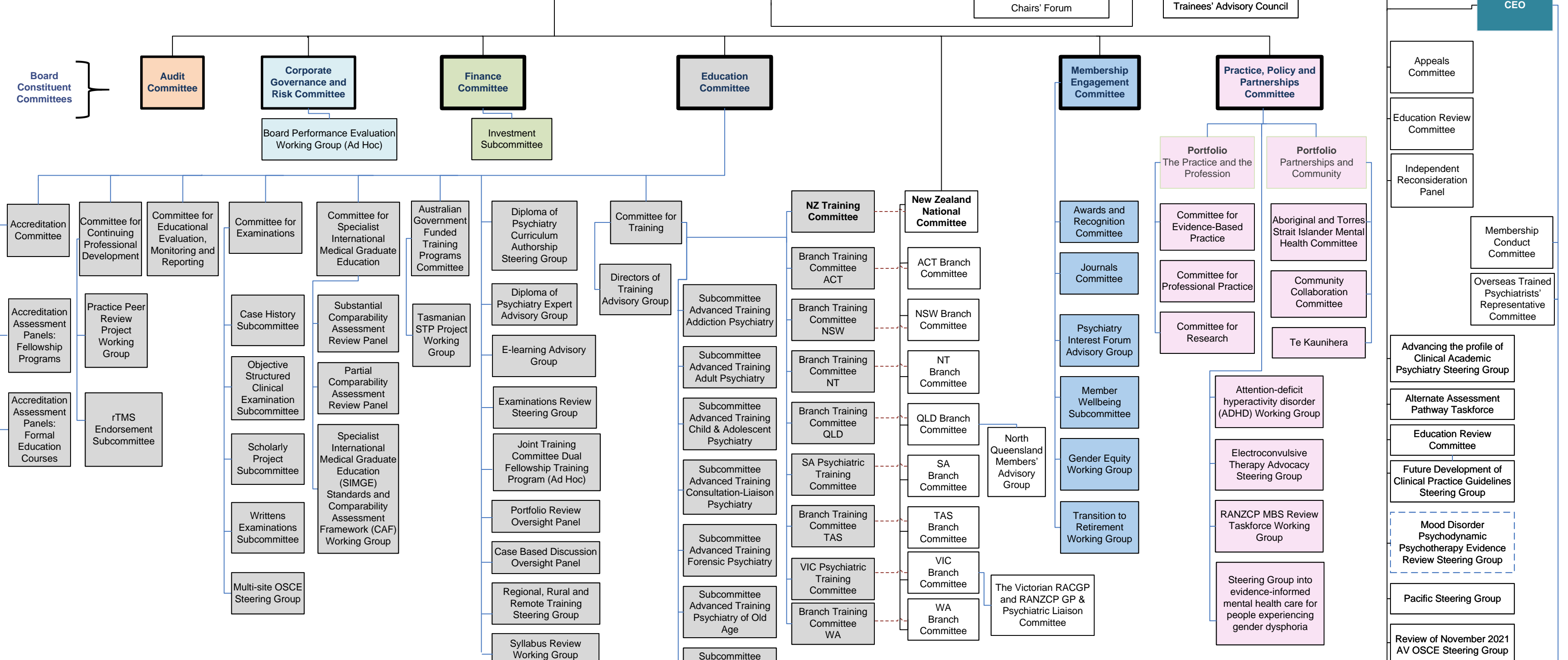
RANZCP Governance Structure as at 3 November 2022



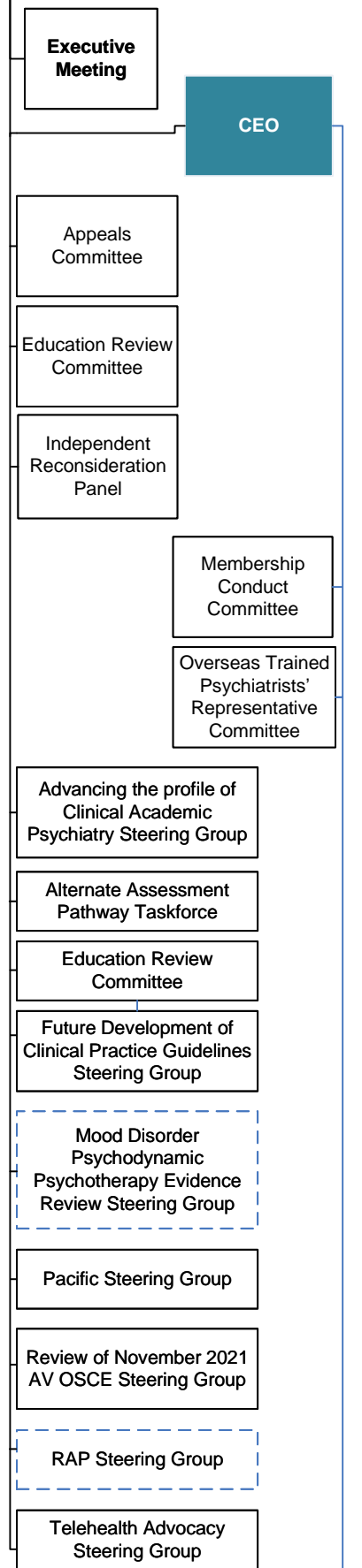
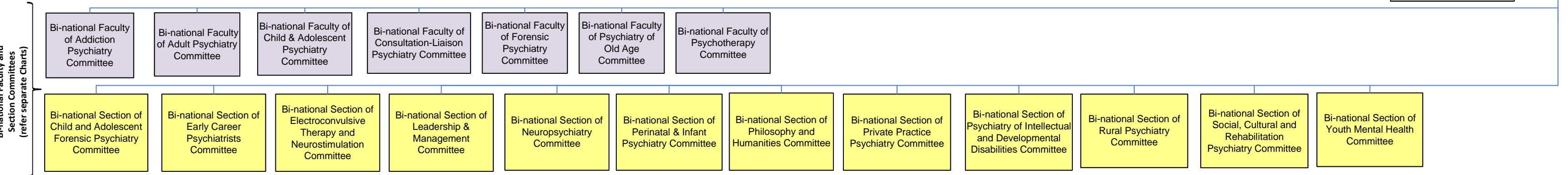
Legend:
 — = In operation
 - - - = Being established
 - - - - = Two way communication

Board

(Refer to separate Network, Faculty and Section Charts)

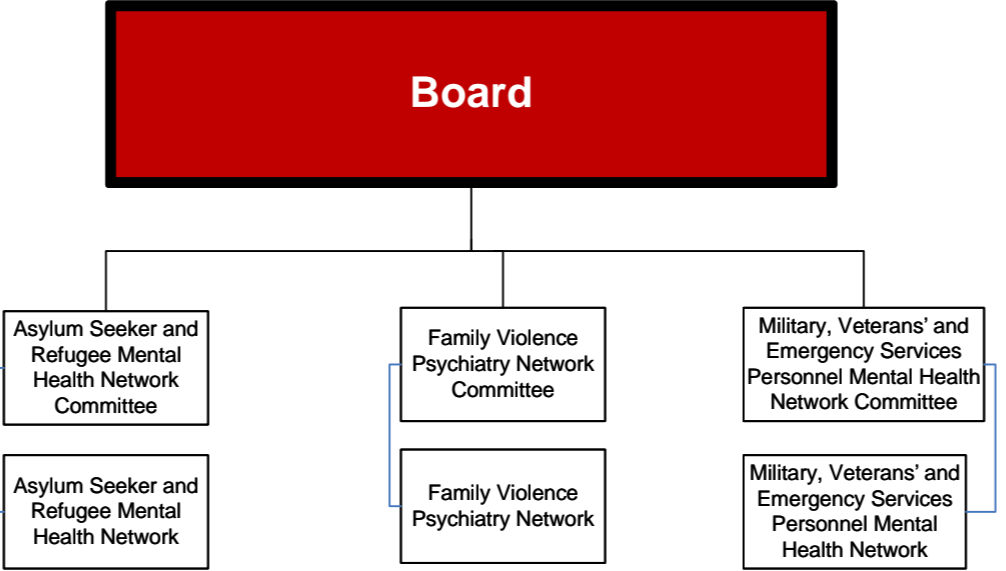


Communication reporting lines:
 Each Bi-national Faculty and Section Committee must maintain close communication and collaboration with their Subcommittee(s) and the appropriate Branch Committee or New Zealand National Committee on College matters relevant to that committee.
 Each Chair (or nominee) of the Branch Training Committee shall maintain close communication and collaboration with the appropriate Branch Committee or New Zealand National Committee on training matters relevant to that jurisdiction



Networks as at 3 November 2022

Legend:
[Black line] = In operation
[Blue line] = Being established



Faculty Committees and Subcommittees as at 3 November 2022

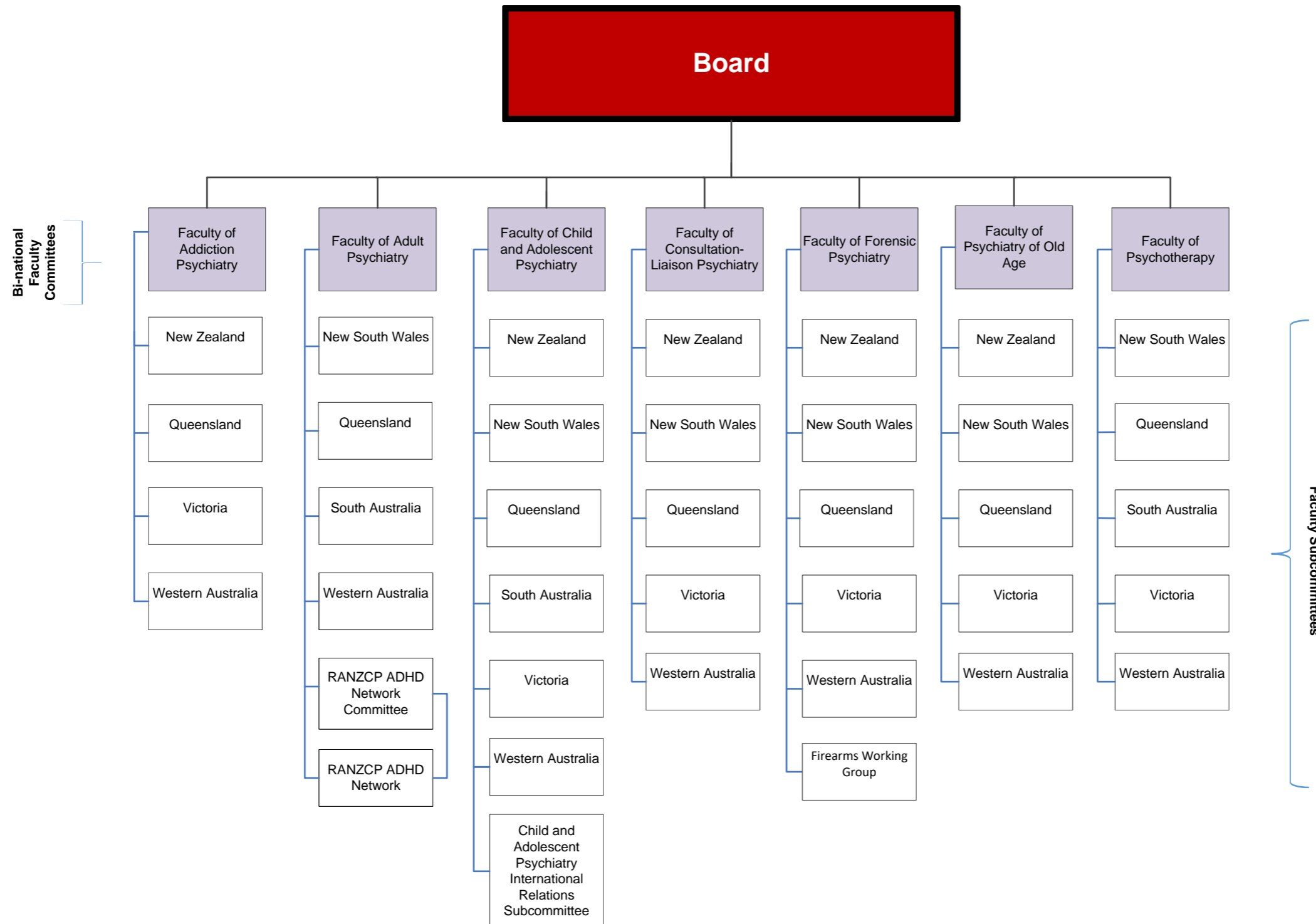
Legend:

= In operation

= Being established

Communication reporting lines:

Each Bi-national Faculty and Section Committee must maintain close communication and collaboration with their Subcommittee(s) and the appropriate Branch Committee or New Zealand National Committee on College matters relevant to that committee.



Section Committees and Subcommittees as at 3 November 2022

Legend:

= In operation

= Being established

Communication reporting lines:

Each Bi-national Faculty and Section Committee must maintain close communication and collaboration with their Subcommittee(s) and the appropriate Branch Committee or New Zealand National Committee on College matters relevant to that committee.

