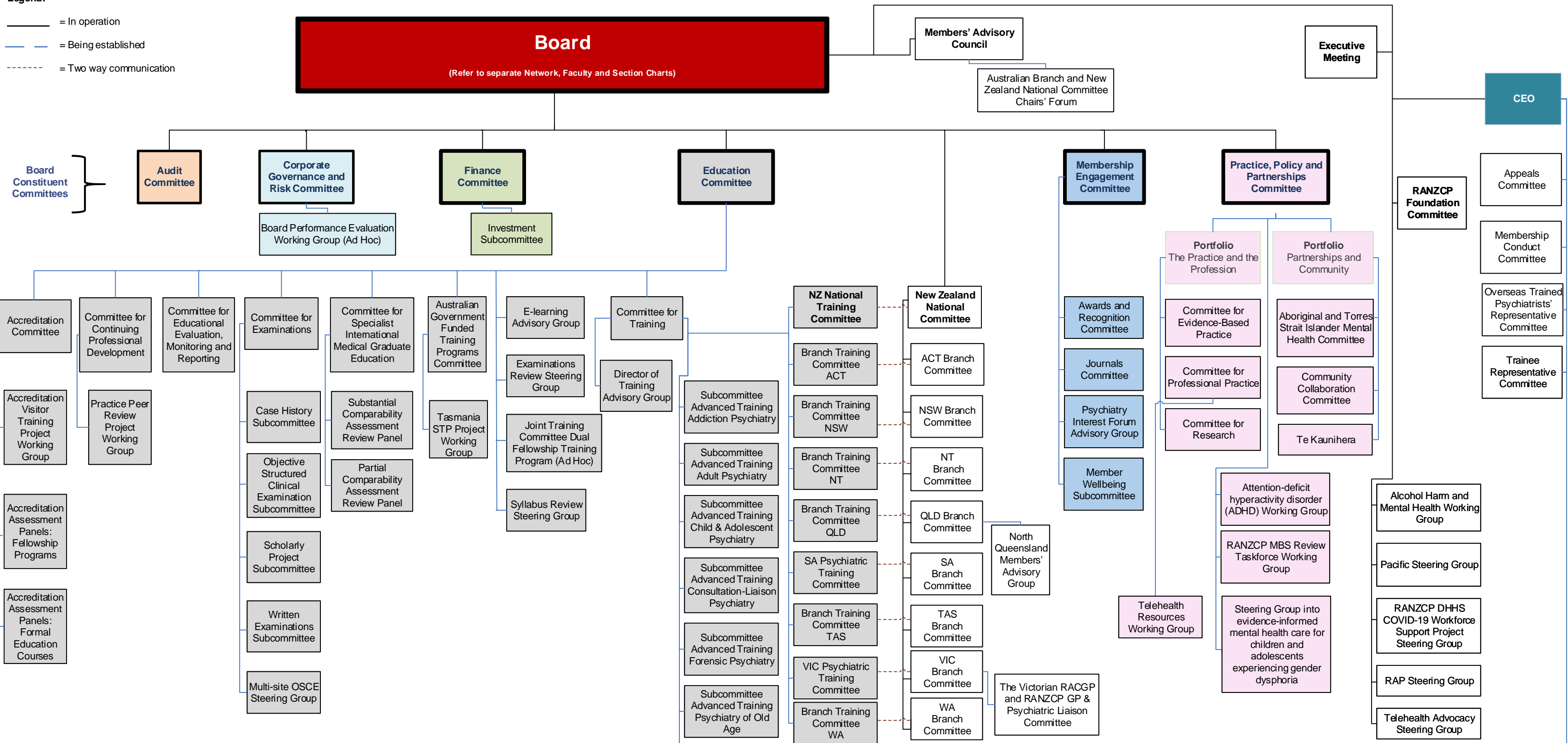


# RANZCP Governance Structure as at 15 July 2021

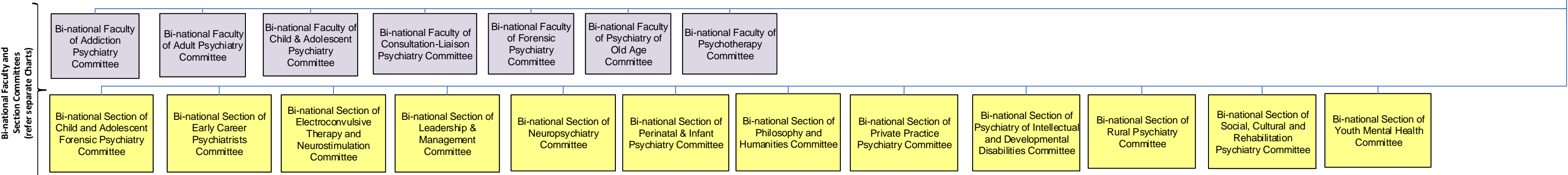


**Legend:**  
 — = In operation  
 - - - = Being established  
 - - - - = Two way communication





**Communication reporting lines:**  
 Each Bi-national Faculty and Section Committee must maintain close communication and collaboration with their Subcommittee(s) and the appropriate Branch Committee or New Zealand National Committee on College matters relevant to that committee.

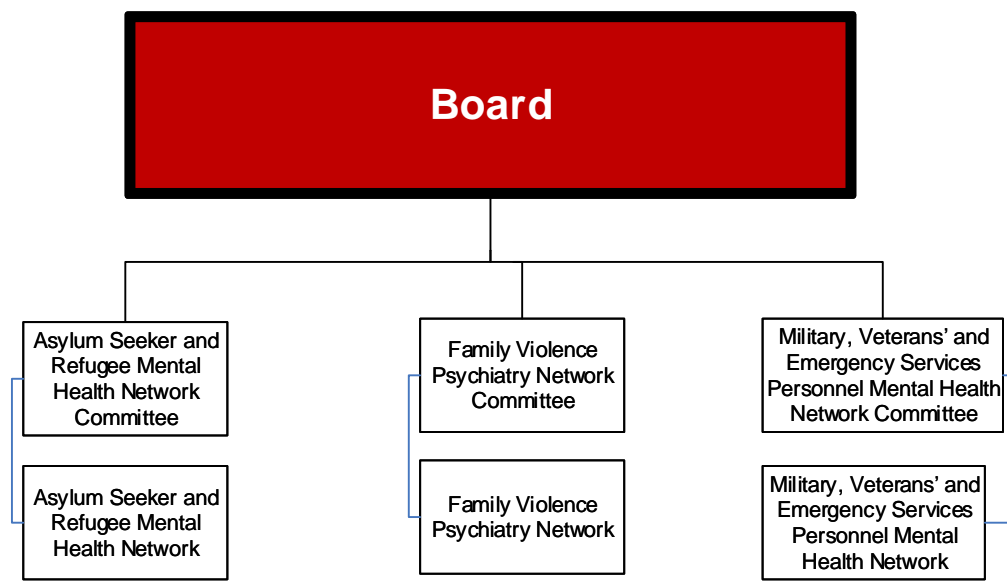
Each Chair (or nominee) of the Branch Training Committee shall maintain close communication and collaboration with the appropriate Branch Committee or New Zealand National Committee on training matters relevant to that jurisdiction



# Networks as at 15 July 2021

**Legend:**

-  = In operation
-  = Being established



# Faculty Committees and Subcommittees as at 15 July 2021

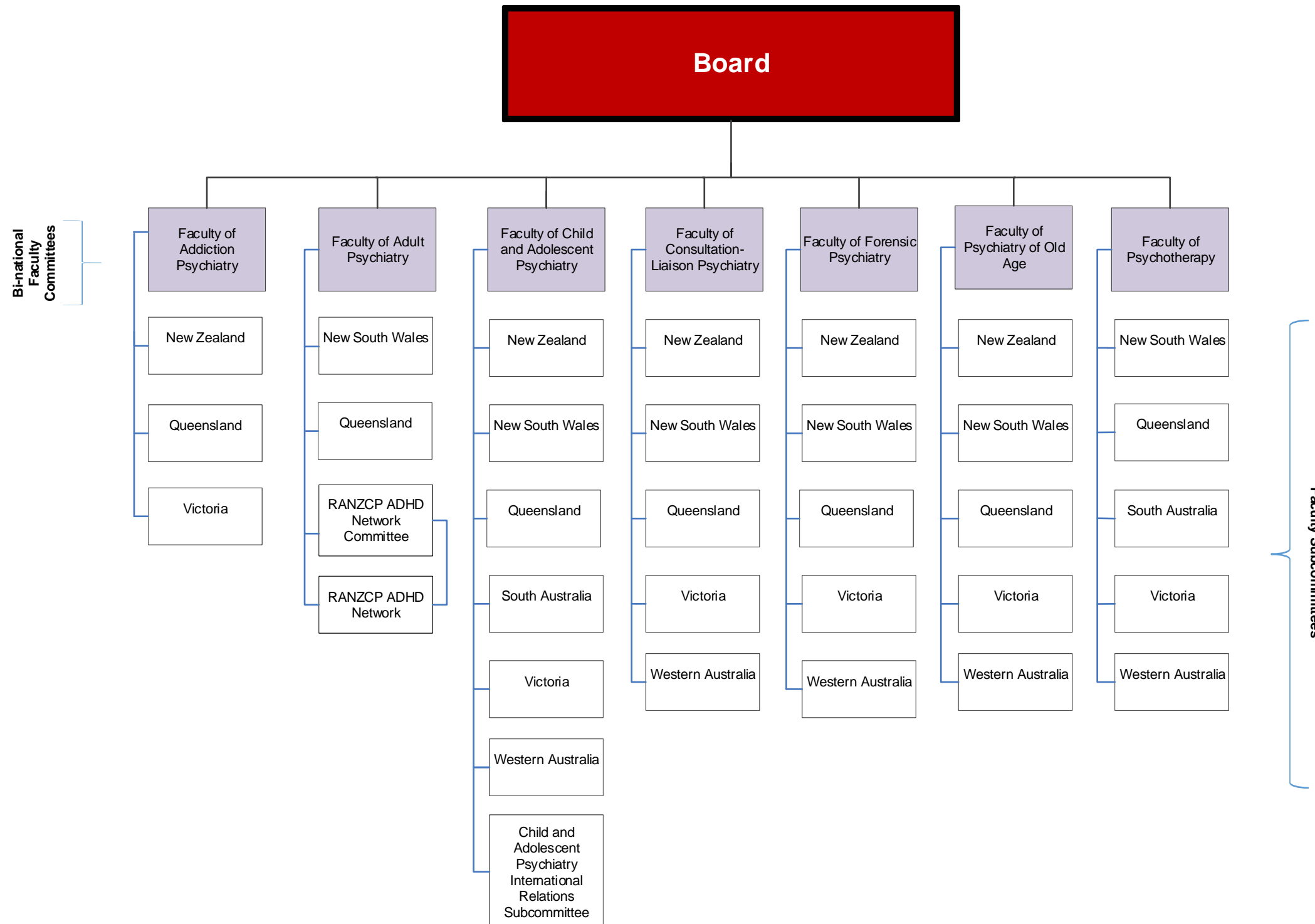
**Legend:**

= In operation

= Being established

**Communication reporting lines:**

Each Bi-national Faculty and Section Committee must maintain close communication and collaboration with their Subcommittee(s) and the appropriate Branch Committee or New Zealand National Committee on College matters relevant to that committee.



# Section Committees and Subcommittees as at 15 July 2021

Legend:

= In operation

= Being established

**Communication reporting lines:**

Each Bi-national Faculty and Section Committee must maintain close communication and collaboration with their Subcommittee(s) and the appropriate Branch Committee or New Zealand National Committee on College matters relevant to that committee.

